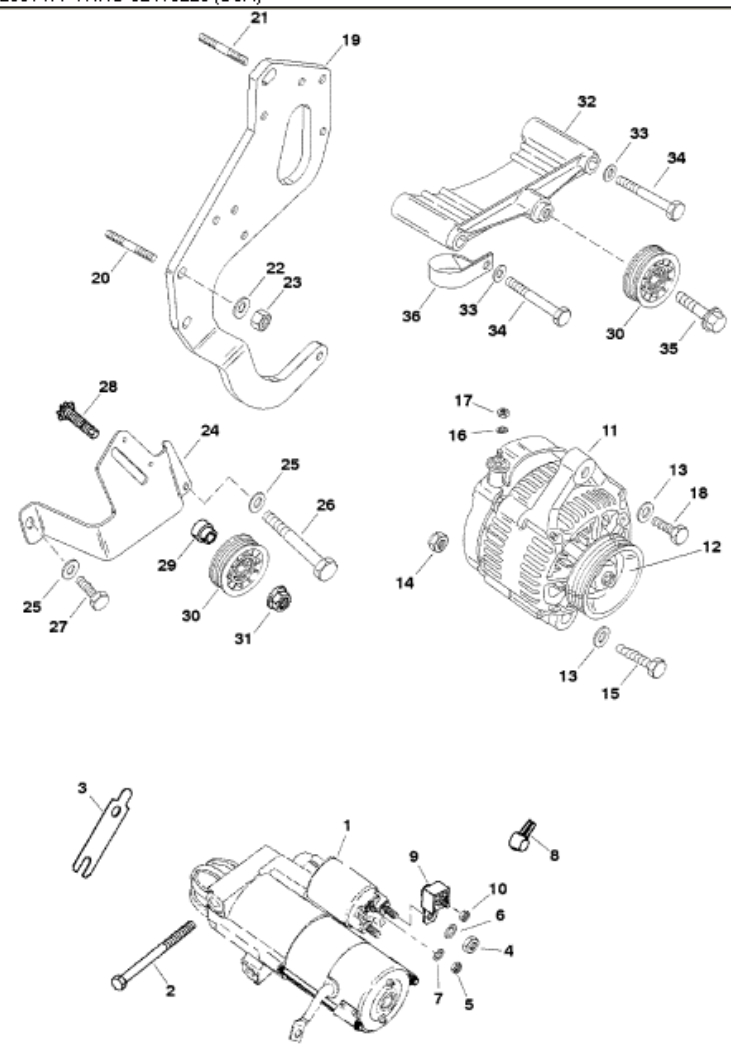


Parts List



Ref	Class	Part	Description	Qty	Comment	Footnote
1	50	806964A 3	STARTER ASSEMBLY	1	(See Starter Assembly Section For	
2	10	805343 2	SCREW (.375-16 x 4.330)	2		
3	15	817272 1	SHIM (Special)	1		
4	11	40063 5	NUT (M8)	1		
5	11	40021 1	NUT (M5)	1		
6	13	39107	LOCKWASHER (.312)	1		
7	13	26996	LOCKWASHER (#10)	1		
8	85	79695	BOOT-Insulator	1		
9	88	79023A91	FUSE ASSEMBLY (90 AMP)	1		
10	11	35045	NUT (.250-28)	1		
11		834832T 2	ALTERNATOR ASSEMBLY	1	(Blue) (Mounting Style - Threaded	
11		857006A 3	ALTERNATOR KIT	1	(Blue) (Mounting Style - Thru Bolts	
12		849043T	PULLEY-Alternator	1	(Blue)	
NS	12	824451	WASHER-Thrust	1	(.610 ID x .890 OD x .062)	
NS	12	846673	WASHER-SS	1	(.265 ID x .500 OD x .06)	
NS	11	826833 6	NUT (M6)	1		
13	12	814806	WASHER	2		
14	11	67980	NUT (.312-18)	1		
15	10	69267	SCREW	1	(.312-18 x 1.750) (Thru Bolt Mount	
15	10	40011149	SCREW	1	(M8 x 25) (Threaded Bolt Mounting	
16	12	846673	WASHER	1		
17	11	826833 6	NUT (M6)	1		
18	10	95802	SCREW (.375-16 x 2.750)	1		
19		849905T	BRACKET-Alternator/Power Steerir	1		
20	16	57920 3	STUD (.437-20 x 2.06)	2		
21	16	842441	STUD (.437-20 x 2.25)	1	(Power Steering Models)	
21	16	57920 3	STUD (.437-20 x 2.06)	1	(Non Power Steering Models)	
22	12	45176	WASHER	3		
23	11	817618	NUT (.437-20)	3		
24		845124T 1	BRACKET-Tensioner	1		
25	12	856774	WASHER	2		
26	10	843575	SCREW (.375-16 x 4.00)	1		
27	10	94247	SCREW (.375-16 x .750)	1		
28	43	818381 2	PINION/STUD	1		
29		845117	BUSHING	1		
30		849296T	PULLEY	1	(Power Steering Models)	
30		849296T	PULLEY	2	(Non Power Steering Models)	
31	11	817618	NUT (.437-20)	1		
32		849297T 1	BRACKET-Idler Pulley	1	(Non Power Steering Models)	
33	12	856774	WASHER	2	(Non Power Steering Models)	
34	10	840344	SCREW (.375-16 x 2.275)	2	(Non Power Steering Models)	